

**EN** To secure safety, a qualified electrician is required to install/remove the luminaire.

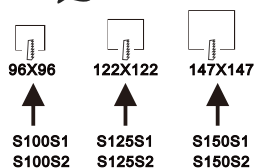
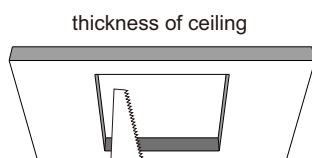
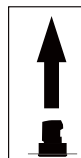
**IT** Per garantire massima sicurezza, far eseguire il lavoro di installazione/rimozione della lampada da un elettricista specializzato.

**DE** Aus Sicherheitsgründen ist der Einbau/Ausbau dieser Leuchte nur durch eine Elektrofachkraft vorzunehmen.

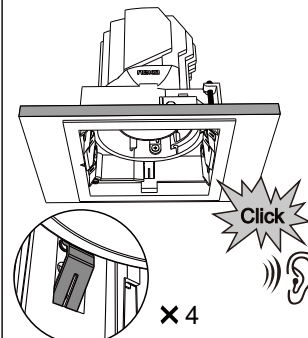
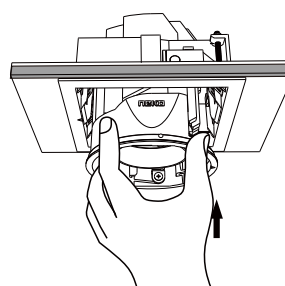
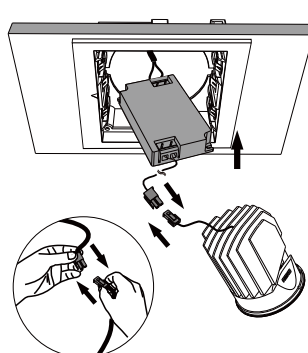
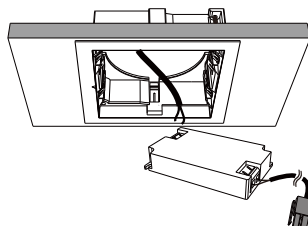
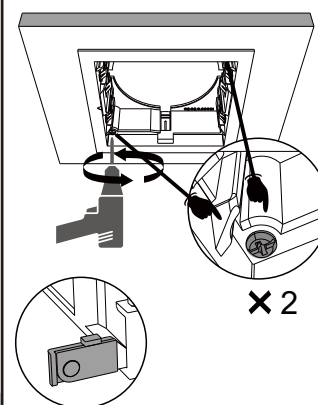
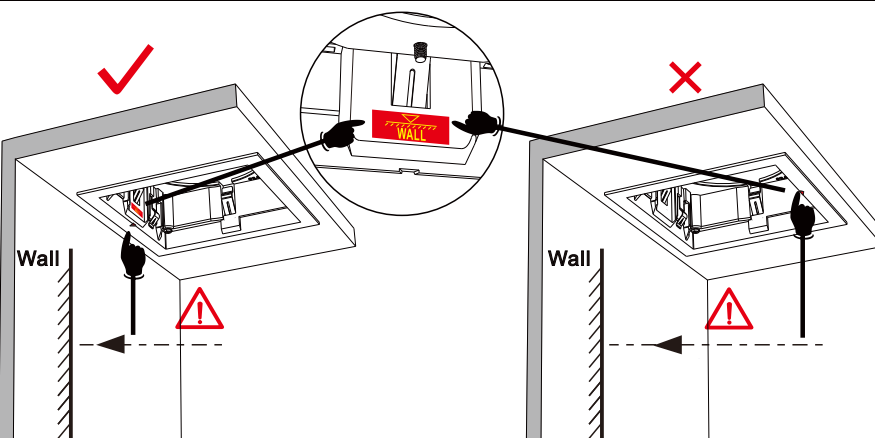
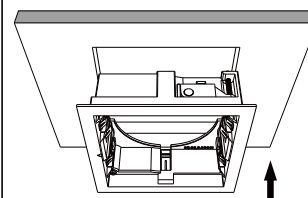
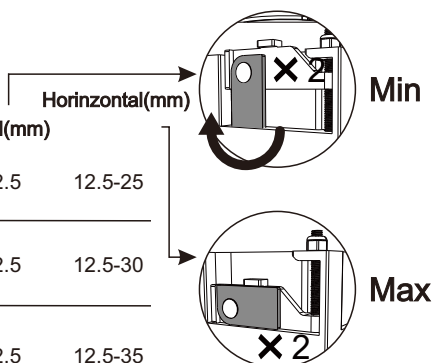
**ES** Para asegurar la seguridad, se requiere un electricista cualificado para instalar / retirar la luminaria.

**FR** Afin de garantir la sécurité du luminaire, celui-ci doit être installé ou retiré par un électricien qualifié.

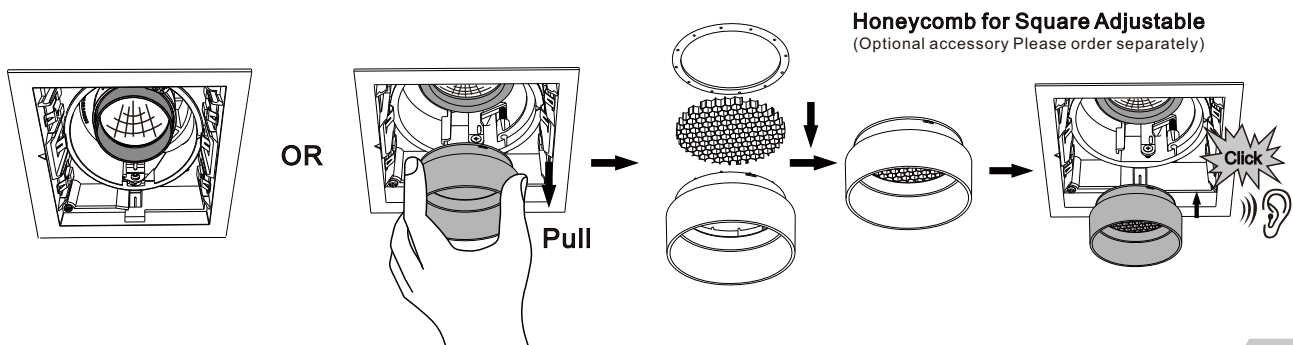
**PT** Para a sua segurança, um electricista qualificado deve atuar na instalação/remoção da luminária.



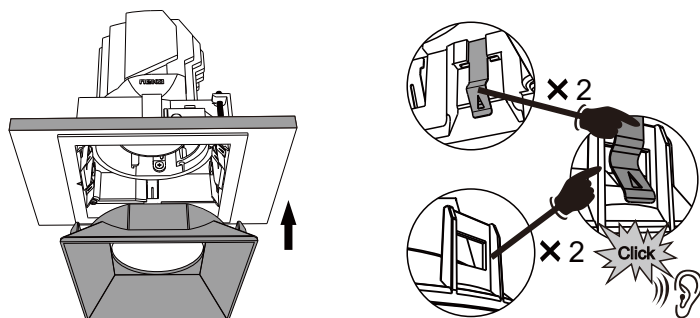
	Vertical(mm)	Horizontal(mm)
S100S1 S100S2	1-12.5	12.5-25
S125S1 S125S2	1-12.5	12.5-30
S150S1 S150S2	1-12.5	12.5-35



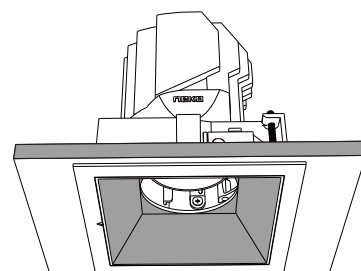
## Square Adjustable



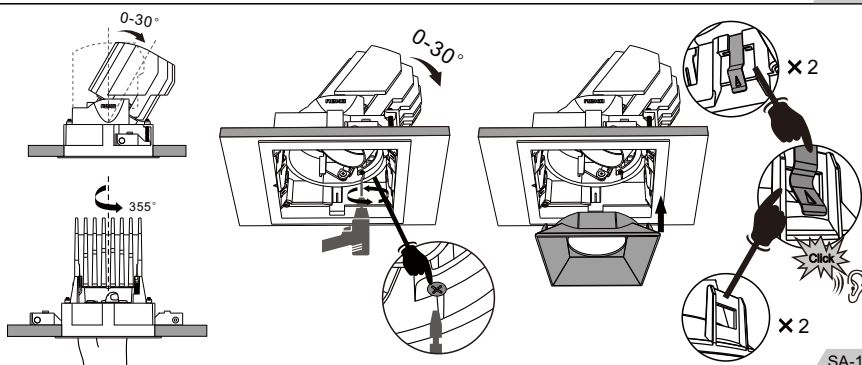
SA-9



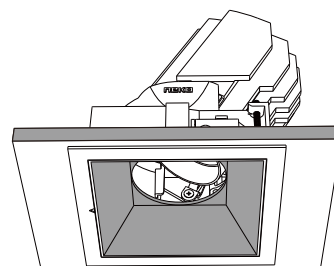
SA-10A



SA-11A

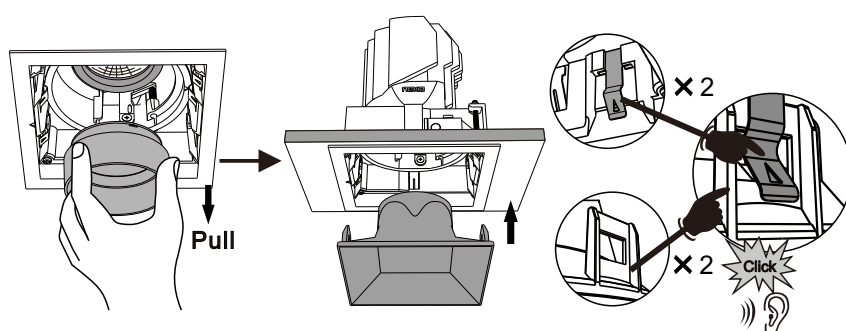


SA-10B

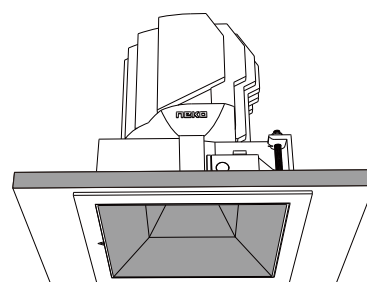


SA-11B

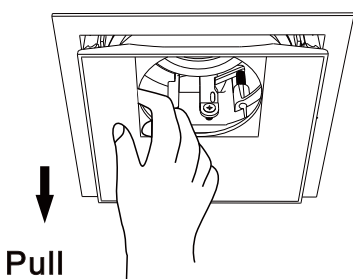
## Square Fixed



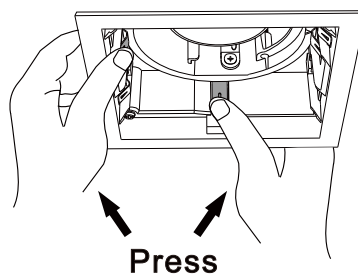
SF-9



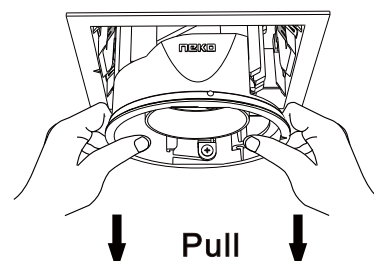
SF-10



1



2



3



**EN** The luminaire is used exclusively for lighting and is to be installed/ removed in accordance with IEEE regulations and installation instructions.

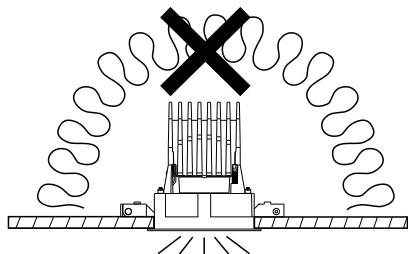
**DE** Die Leuchte ist ausschliesslich für Beleuchtungszwecke vorgesehen. Der Einbau/Ausbau hat gemäss den einschlägigen nationalen Richtlinien und Vorschriften sowie den beiliegenden Montageanweisungen zu erfolgen.

**FR** Le luminaire ne doit être utilisé qu'à des fins d'éclairage et doit être installé ou retiré conformément aux réglementations relatives aux DEEE et aux instructions d'installation.

La lampada va utilizzata esclusivamente per funzioni di illuminazione e va installata/rimossa ai sensi dei regolamenti IEEE e delle istruzioni di installazione.

**ES** La luminaria se utiliza exclusivamente para iluminar y tiene que instalarse / retirarse de acuerdo con las instrucciones de instalación y las normativas de la IEEE.

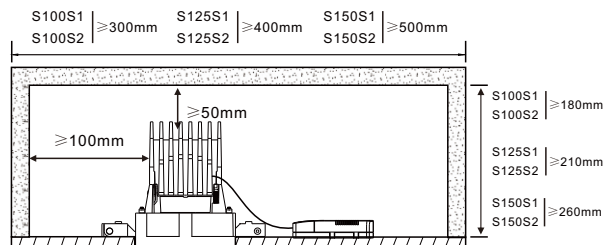
**PT** A luminária é utilizada exclusivamente para iluminação e deve ser instalada/removida de acordo Com as regulações e instruções de instalações IEEE.



**EN** Luminaire not suitable for covering with thermally insulating material.

**DE** Die Leuchte darf nicht von Wärmedämmstoffen überdeckt werden.

**FR** Le luminaire ne doit pas être recouvert par des matériaux d'isolation thermique.



**IT** Non coprire la lampada con materiale termoisolante.

**ES** Luminaria no adecuada para cubrirse con material aislante térmicamente.

**PT** A luminária não é adequada para ser coberta com material isolante térmico.